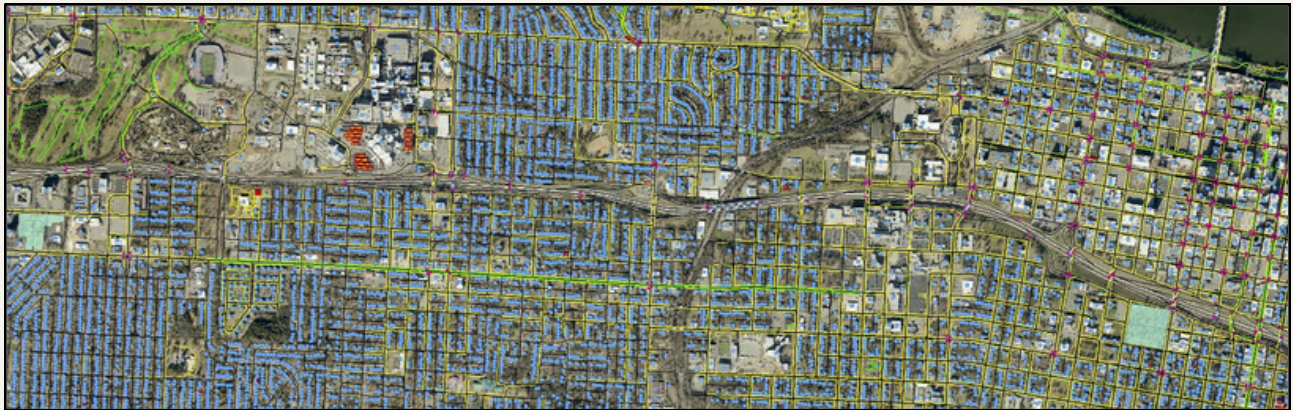


## ORTHO QC IS COMPLETE

PAgis staff has completed QC of the 2024 orthorectified aerial imagery that we received last summer. During this QC process, PAgis staff encountered many instances of RV's and mobile homes without addresses that are clearly being used as residences. In our new role as NG911 coordinators for Pulaski County, it is more important than ever for PAgis to have addresses for any location where people may be living. To help resolve these problems, PAgis staff and the Technical Advisory Committee have created a temporary Data Review subcommittee that is working to redefine how PAgis captures buildings and addresses. The Data Review subcommittee is focusing on updating PAgis capture conditions for residential RV's, tiny homes, and accessory dwelling units.



## ESRI DEVELOPER AND TECHNOLOGY SUMMIT

ESRI held its annual Developer and Technology Summit from March 11<sup>th</sup> - 14<sup>th</sup> in Palm Springs, CA. PAgis sent a GIS Analyst, Faith Mullins, to attend the summit. She returned feeling energized and excited to delve deeper into the world of GIS development. The Little Rock Water Reclamation Authority also sent their GIS Analyst, Mizanur Rahman, to the summit. He says it was a great experience. He was able to troubleshoot problems directly with ESRI staff and solved problems LRWRA experienced after their Enterprise system upgrades.

## PAGIS TEMPORARY OFFICE RELOCATION

PAgis has temporarily relocated offices from the Central Arkansas Water JTH building on Capitol Avenue to the Simmons Tower building on Broadway. PAgis plans to work in the Simmons tower for the next 18 - 24 months as the JTH building is fully remodeled. During this time, all committee meetings will be held at the North Little Rock City Services building at 700 W. 29<sup>th</sup> St, NLR, 72114.

# PAGIS MEMBER SPOTLIGHT



**MIZANUR RAHMAN**

GIS ANALYST  
LITTLE ROCK WATER  
RECLAMATION AUTHORITY

Mizanur Rahman has been a GIS Analyst at the Little Rock Water Reclamation Authority for 10 months.

**Do you have a favorite map?**

Yes—the John Snow Cholera Map (1854) from my undergraduate studies. It’s a powerful example of how spatial analysis can reveal deep insights.

**What do you do at your job?**

I manage LRWRA’s GIS infrastructure, which includes keeping data up to date, producing maps, updating software, streamlining the sewer line data collection process using GIS tools, and creating web apps and dashboards. I also handle all kinds of GIS requests.

**Is there a project you’ve worked on that made you feel truly accomplished?**

Yes! I recently created a data collection tool for our maintenance department that automatically collects sewer line data and updates it in real-time to the database. It saved the team a lot of time, and they were really impressed.

**How do you use PAGis data in your daily work?**

All of our basemaps are built using data from PAGis. The web applications also use PAGis data. Our crews and I use these maps and applications every day.

**Is GIS what you thought it would be?**

It has exceeded my expectations. I initially thought GIS was just about mapping, but now I realize it’s a powerful decision-making tool—whether it’s tracking infrastructure for utilities or integrating GeoAI.

**Do you have a favorite GIS resource?**

Yes—online resources like Esri documentation, blogs, and community forums are my go-to. I also frequently explore GitHub for innovative GIS tools and techniques.

**If you could magically acquire a new skill overnight, what would it be?**

I’d love to become highly skilled in programming so I could build custom GIS tools, design new web applications, and automate all the work I haven’t yet tackled.

**If your life had a theme song, what would it be?**

“Eye of the Tiger” - it keeps me focused and fired up!

**If you could visit any place in the world, where would it be?**

Antarctica - I’d love to see what’s going on there and experience it in real time.

# PAGIS WORD SCRAMBLE

Solve this word scramble to read a message about the PAGIS Ortho QC process.

tifrrdceohtei = \_\_\_\_\_

rlaei = \_\_\_\_\_

phpyrgaotho = \_\_\_\_\_

rsneues = \_\_\_\_\_

htta = \_\_\_\_\_

gPsAi = \_\_\_\_\_

diitezigs = \_\_\_\_\_

nilguibds = \_\_\_\_\_

nad = \_\_\_\_\_

draso = \_\_\_\_\_

cuetracaly = \_\_\_\_\_

## Third Quarter Answers

1. Use this app to view infrastructure that helps during storms.
2. This layer shows you where to find headstones.
3. This layer shows you where you can walk.
4. Company PAGis contracted with in 1997 to acquire orthophotography and updated planimetric data.
5. The number of employees at PAGis.

